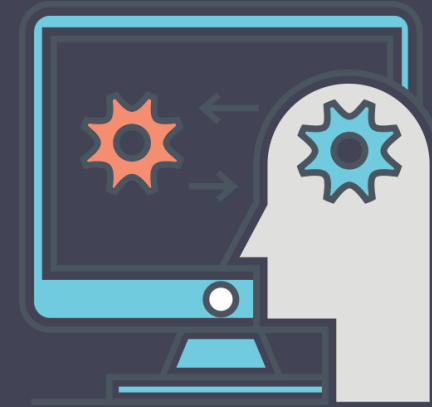


HMI course

Human-Machine Interaction

Introduction to HMI



Imène AIT ABDERRAHIM
i.aitabderrahim@univ-dbkm.dz
Khemis Miliana University

Human-Machine Interaction (HMI)

- Semester module, fundamental unit
Credits :5, Coefficient:3
- Level: 3rd Year Bachelor
- Evaluation: Exam + interrogation + TP + TD+ homework
- Responsible of the module: Dr. I. Ait Abderrahim

Chapter 1

Introduction to HMI



Objective



- In this module you will learn about Human-Machine Interface (Interaction) importance, its role in nowadays digital landscape, and what are the techniques and characteristics to design a good HMI.

Importance of HMI

- HMI plays a pivotal role in shaping the way we interact with technology and influences the success and adoption of digital products and systems
- HMI directly impacts how users interact with technology and can determine whether users find a technology accessible, intuitive, and valuable.

Outline

- Introduction to HMI
- History of HMI

HMI?

- HMI
 - **Human- Machine Interface**
 - **Human - Machine Interaction**
- Called also:
 - **Human- Machine Communication**
 - **Human- Machine Dialogue**
 - **Person - Machine Interaction**
 - **Human - Computer Interface**



HMI -definitions

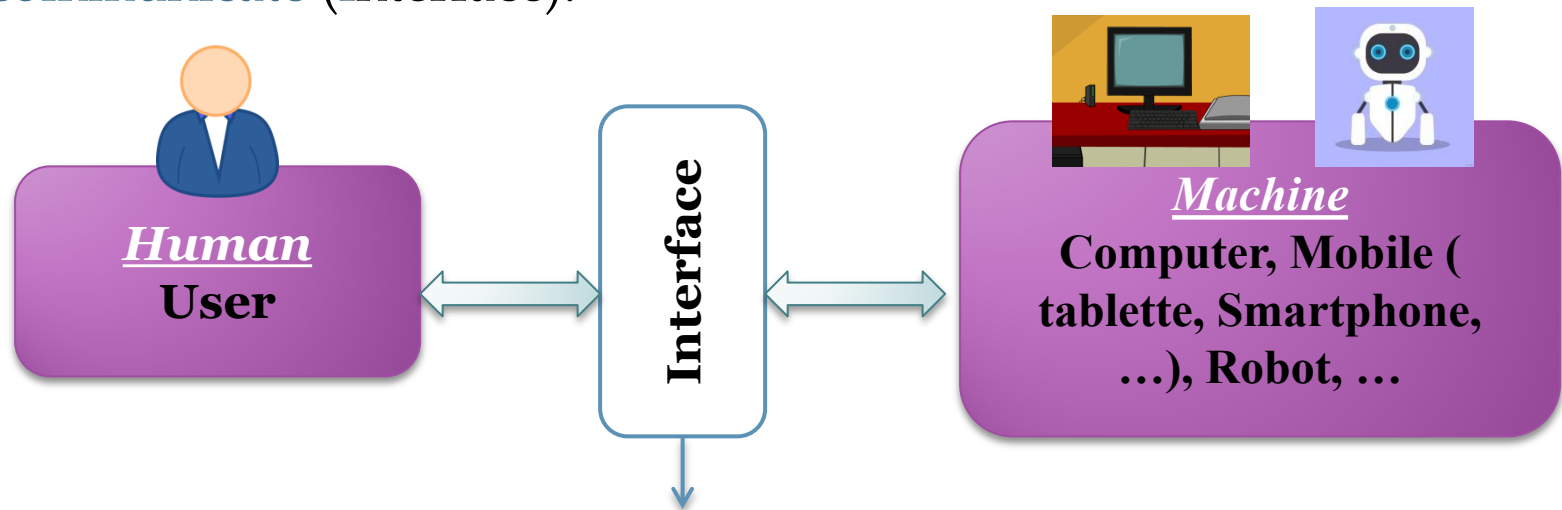
- **Human-Machine Interface** : A set of hardware and software devices (keyboard, mouse, touchscreen, software, web sites, screen) enabling a user to command, control and supervise an **interactive digital system**.
- **Interaction Homme-Machine** : Discipline devoted to the **design, implementation** and **evaluation** of **interactive systems** dedicated for human users, and to the **study** of the **main phenomena** that surround them.

HMI -definitions

- HMI (Human-Machine Interaction) is the study of all aspects related to the **design**, **implementation**, and **evaluation** of interactive systems to best meet user needs.
- **Design:** Creative aspects.
- **Implementation:** Technical aspects of realization (Programming).
- **Evaluation:** Aspects related to the validation of ergonomics (testing).

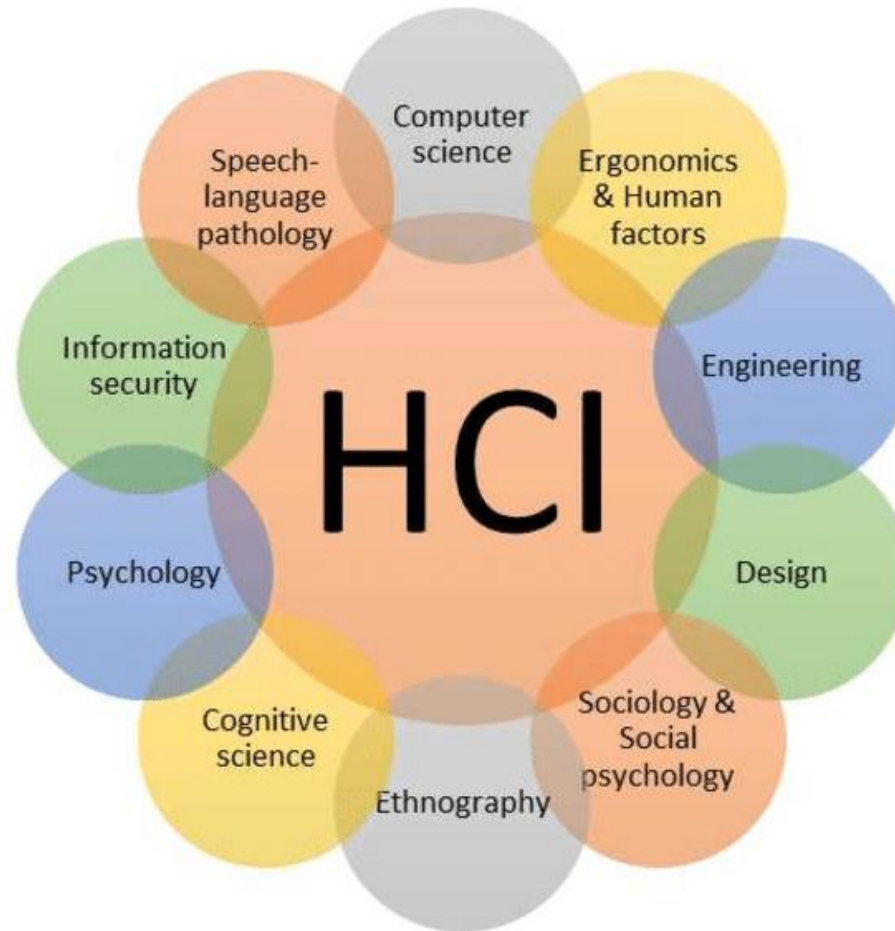
HMI -definitions

- There are three elements to consider in an HMI system: the **user** (Human), the interactive system (**Machine**) and the **way** they communicate (**Interface**).



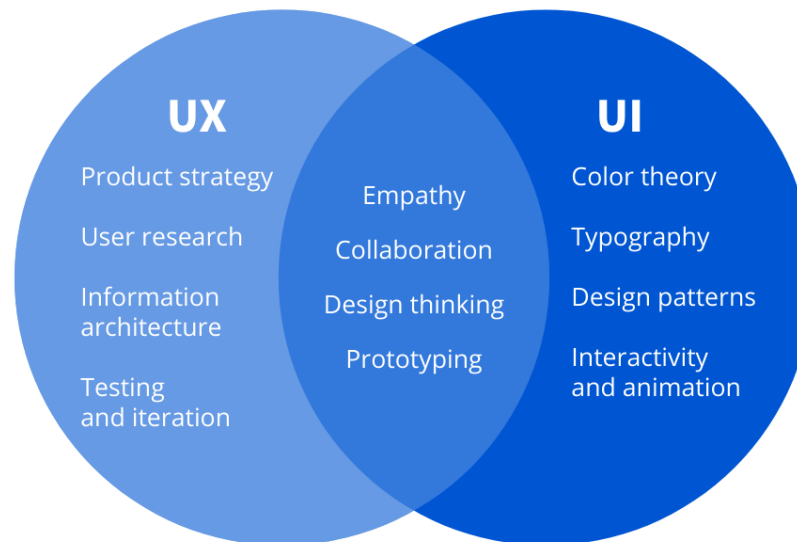
*Human - Machine Interface: is used as a **language (way) of communication** between the two elements (H-M)*

HMI - multidisciplinary field



UI design vs. UX design

- **Ergonomics vs design**
 - Design : modes dependent
 - Ergonomics : constant
- **User Interface (UI) design /User eXperience (UX) design**





Questions?